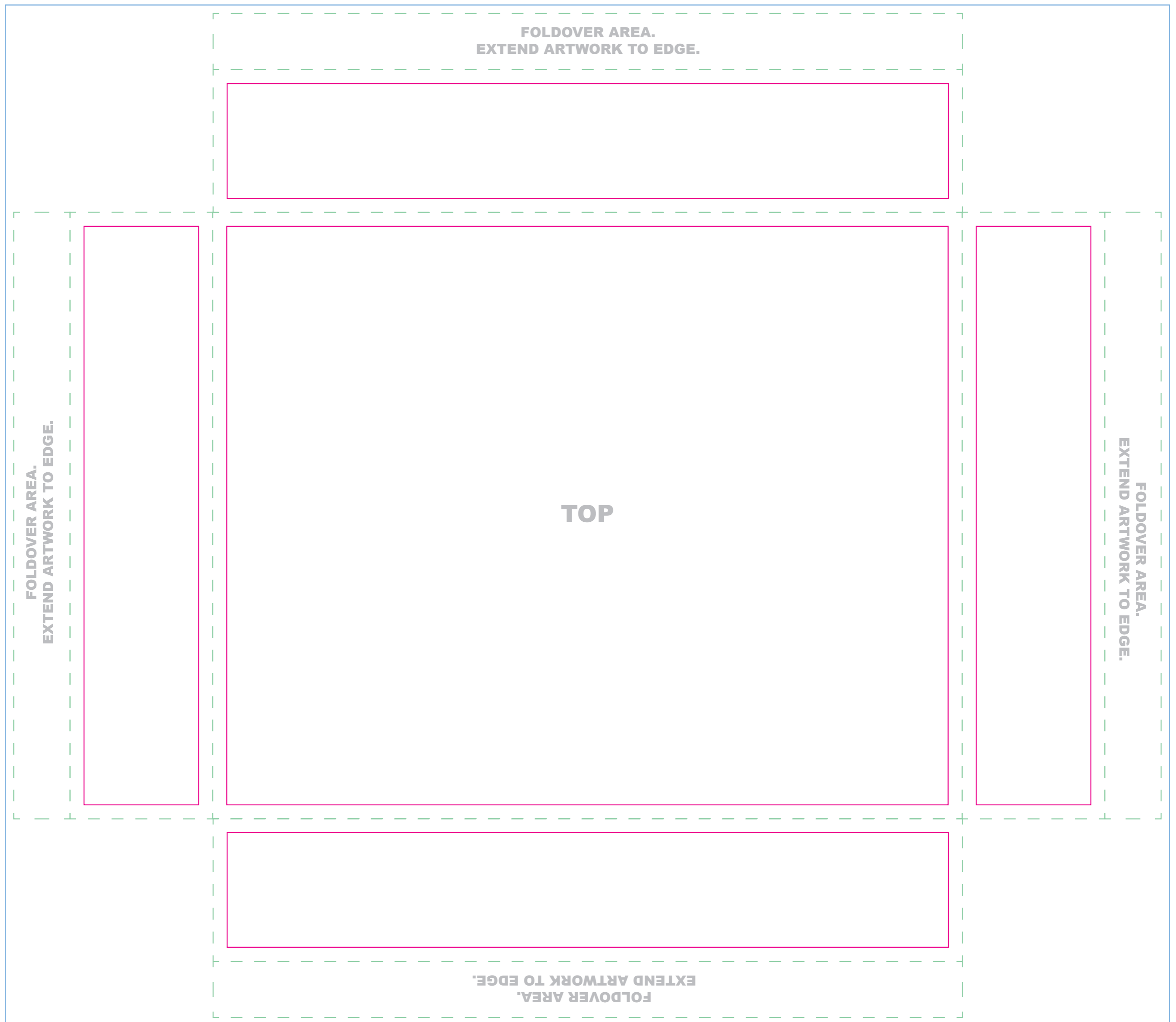


Everything we print legally needs to say something along the lines of "Printed in China" or "Printed in PRC." Please be sure that this is included somewhere that will be visible on your tuck box.

**Note:** Do not place artwork on the guide layer.

- File Submission:** We require two (2) files.
1. Artwork on one layer with guide layer on top\*
  2. Artwork alone without guide layer

\*Our printer uses the first file as a reference to make sure your box prints as expected.



**DEFINITIONS**

**Bleed line** Artwork that extends to the edge of the card must extend to the bleed line.

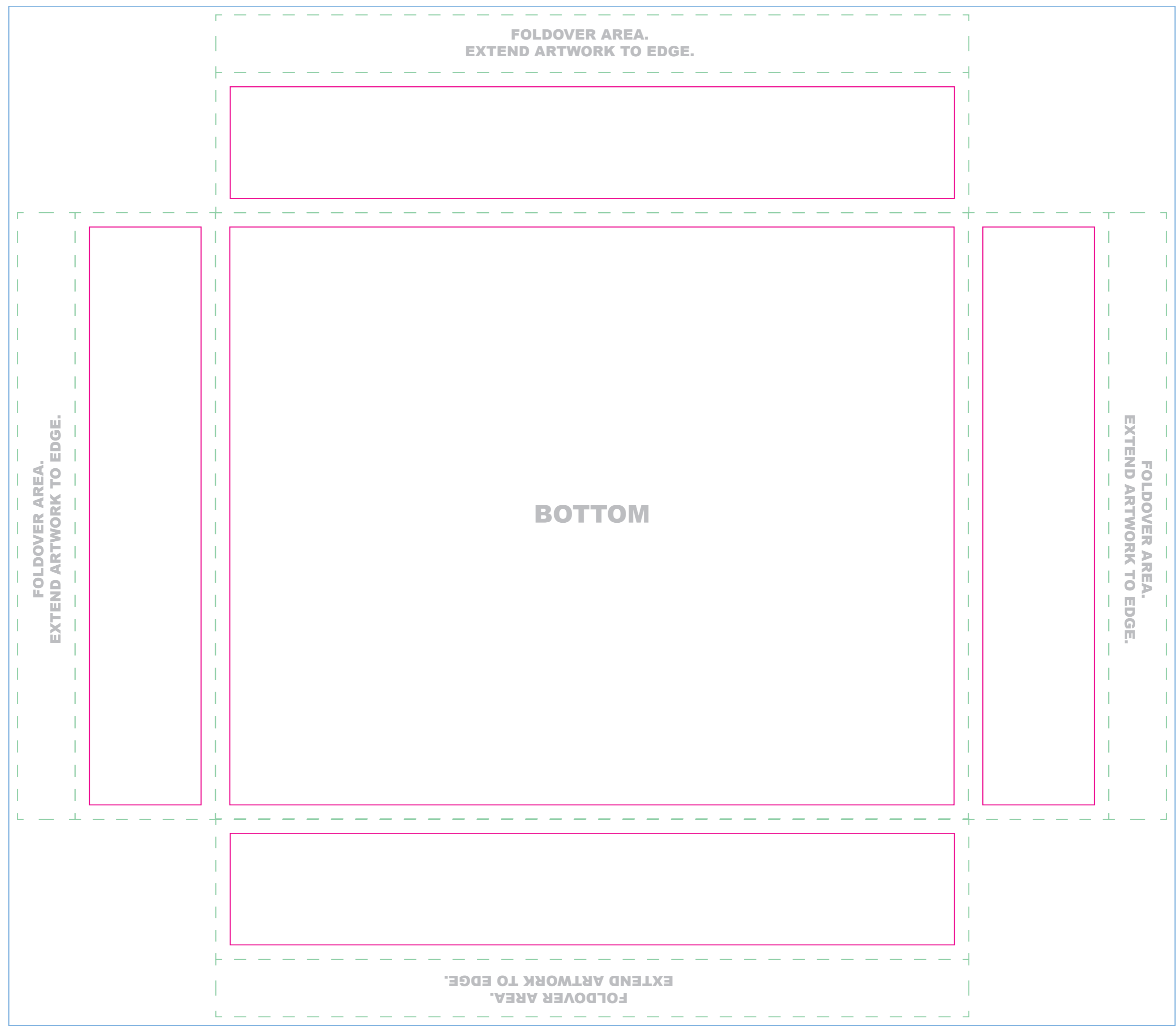
**Trim line** This is the final size of your box.

**Safe Zone** All important content should be inside this line to account for a minor trimming variance.

Everything we print legally needs to say something along the lines of "Printed in China" or "Printed in PRC." Please be sure that this is included somewhere that will be visible on your tuck box.

**Note:** Do not place artwork on the guide layer.  
**File Submission:** We require two (2) files.  
1. Artwork on one layer with guide layer on top\*  
2. Artwork alone without guide layer

\*Our printer uses the first file as a reference to make sure your box prints as expected.



- DEFINITIONS**
- Bleed line** Artwork that extends to the edge of the card must extend to the bleed line.
  - Trim line** This is the final size of your box.
  - Safe Zone** All important content should be inside this line to account for a minor trimming variance.